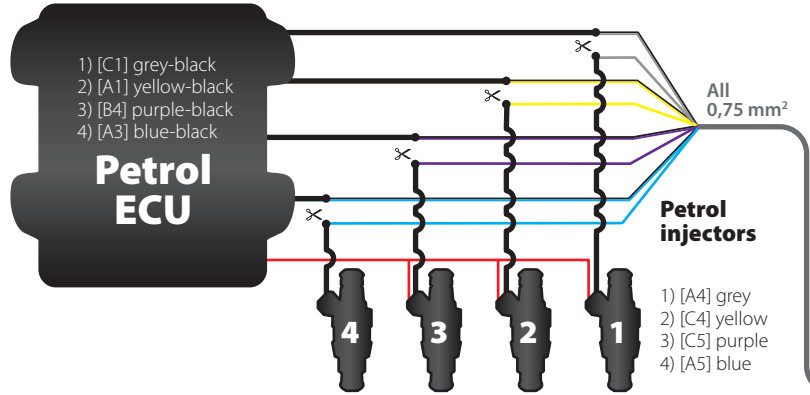
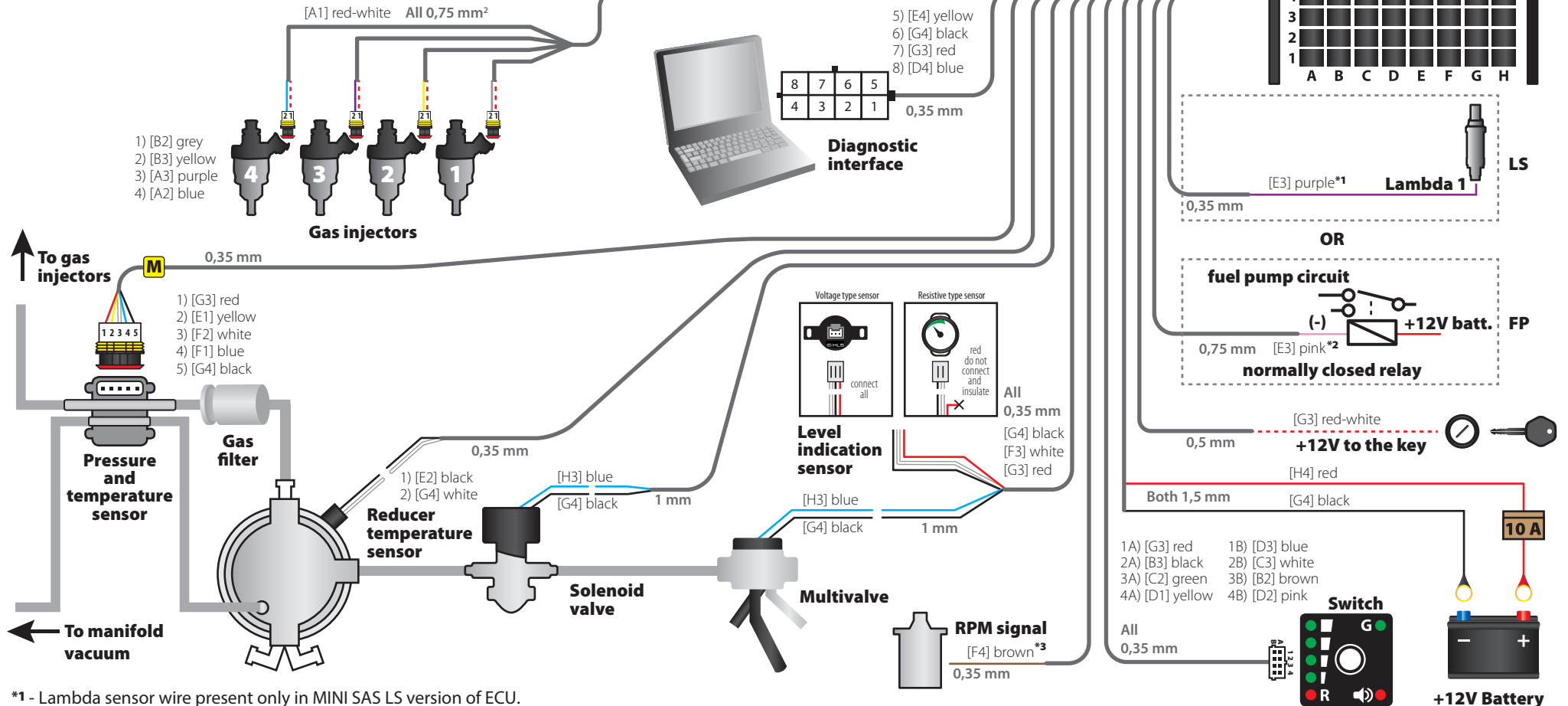


Petrol ECU side



A1	Petrol injector 2 (petrol ECU side)	A2	Petrol injector 2 (injector side)	A3	Petrol injector 4 (petrol ECU side)	A4	Petrol injector 4 (injector side)
B1	Petrol injector 1 (injector side)	B2	LED 1	B3	LED 4 (red reserve diode)	B4	Petrol injector 3 (petrol ECU side)
C1	Petrol injector 1 (petrol ECU side)	C2	LED 2	C3	LED 3	C4	Petrol injector 3 (injector side)
D1	LED 5 (yellow diode)	D2	Switch-buzzer	D3	Switch-button	D4	Diagnostic interface TX
E1	Gas temperature	E2	Reducer temperature	E3	Lambda 1*1/ Fuel pump*2	E4	Diagnostic interface Rx
F1	Manifold Absolute Pressure (Vacuum)	F2	Reducer differential pressure	F3	Level indication sensor	F4	RPM
G1	Gas injector 1	G2	Gas injector 2	G3	+12V ignition (from the key)	G4	GND
H1	Gas injector 3	H2	Gas injector 4	H3	+12V solenoid valve	H4	+12V battery

MINI SAS LS / MINI SAS FP ECU



*1 - Lambda sensor wire present only in MINI SAS LS version of ECU.

*2 - Fuel pump disconnection wire present only in MINI SAS FP version of ECU.

*3 - Optional connection.