

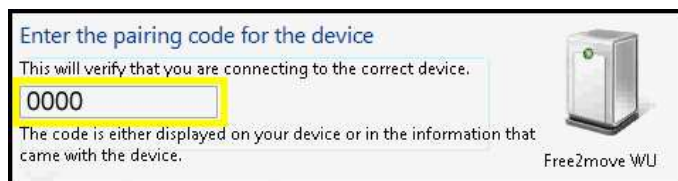
- The Pc shows all bluetooth devices available. Select: *Free2move WU*



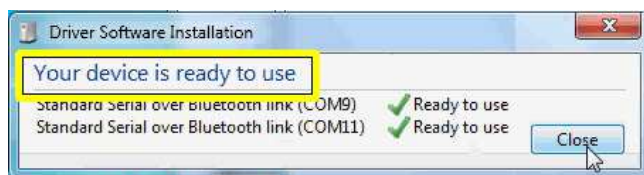
- Select *Enter the device's pairing code*



- Always digit the *Pairing code: 0000*



- After entering pairing code, windows finish intallation and show the serial port available.



AR-300 BT LINK Bluetooth interface



Installation manual

for Windows 7 and windows XP

What is AR-300?

- AR-300 is a Bluetooth to RS-232 converter. It provides a wireless communication to a serial devices that use the RS232 standard protocol.

Dongle installation

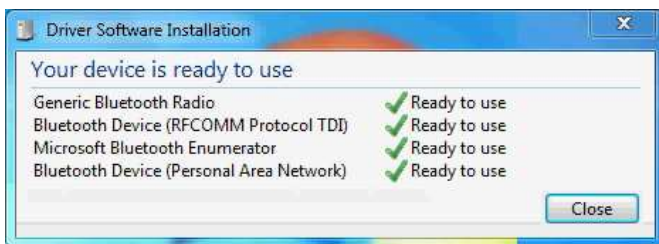
- Connect the dongle to usb port on your pc



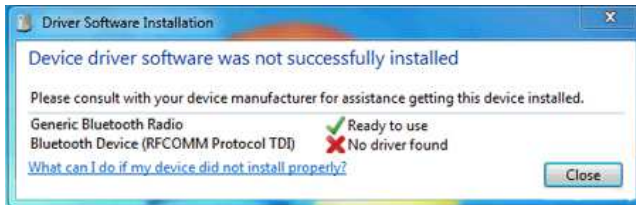
- Windows automatically recognizes a new device and tries to install the software drive. Follow the instruction.



- If installation is successfully the following message appear,



- Otherwise, if some error occurs the system shows this message.



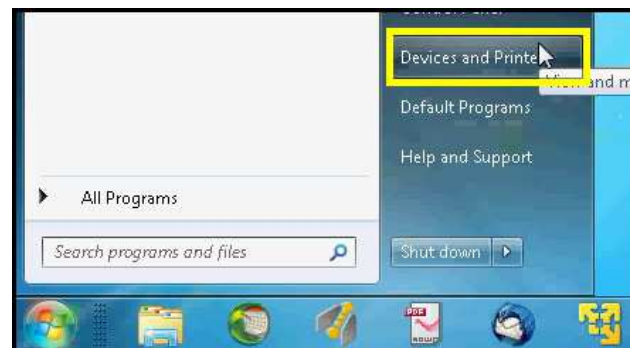
In this case, your computer must be connected to the Internet to be able to search online for a device driver, then try to reinstalling your device.

Establishing a bluetooth connection

- Connect the AR-300 bluetooth to the four poles ECU connector. Make sure that device is powered (turn on the key)



- [Win 7] Click *Start menu / Devices and Printer*.
[Win XP] Click *Start menu / Control Panel / Bluetooth Devices*



- [Win 7] Click *Add device* to start the search of the AR-300 device
[Win XP] Select: *Devices* tab and click *Add*

