

Software Installation Guide IN 4 STEPS

USB INTERFACE Installation Guide IN 9 STEPS

1. Software Installation Guide

Installation Instructions for Windows VISTA

- The installation instructions for Windows Vista are the same as for other type of Windows.
- Important thing is to ask Stefanelli **the file msvbvm50.dll** which you must copy into c:\windows\system **BEFORE INSTALLATION** of Stefanelli software.

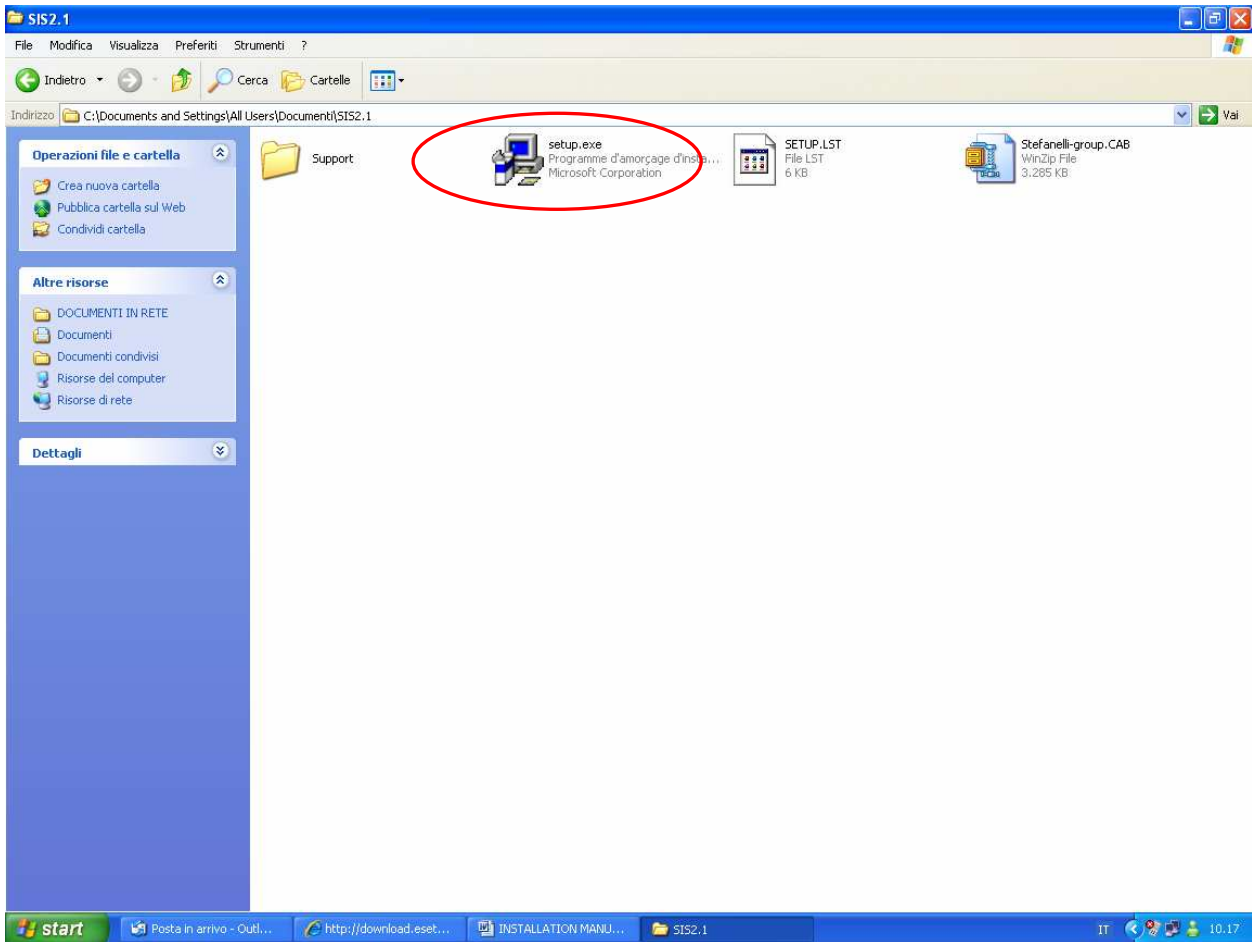
Installation Instructions for - Windows 95/98/ME/NT/2000/2003/XP/

- To install from the STEFANELLI CD, simply insert the CD into the drive.
- To install the download version (recommended, as it will be the most up-to-date), first download the installer 'TARATURE PROGRAM v.2.1' from the Stefanelli Group website: <http://www.stefanelligroup.com>

Whether from a CD or from a download, the installation instructions from this point are the same.

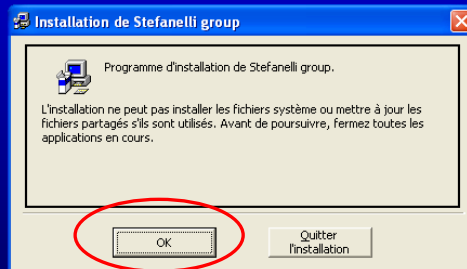
Below 4 STEPS to install the software:

STEP 1. Run the install file setup.exe from the CD's root directory



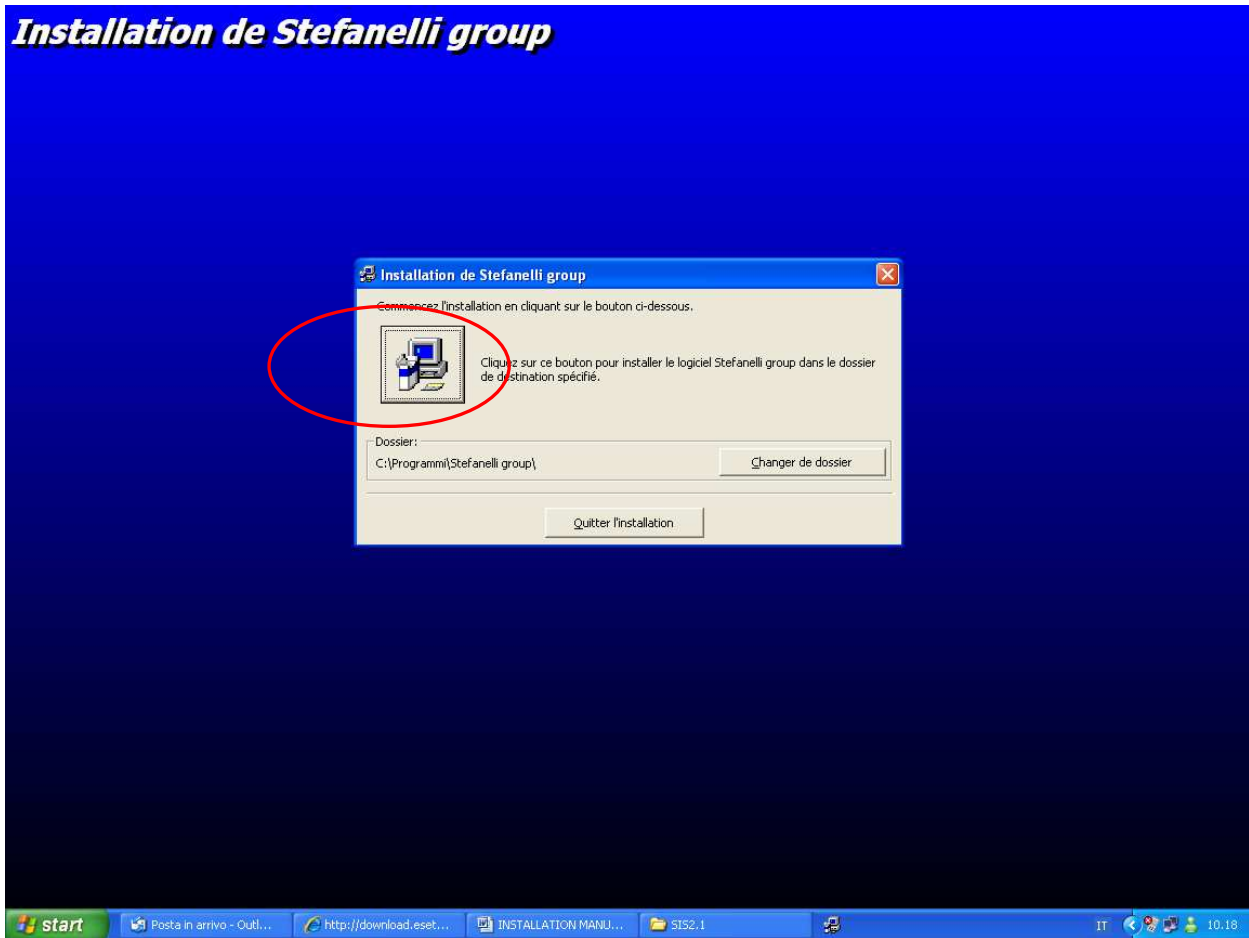
STEP 2.

Installation de Stefanelli group



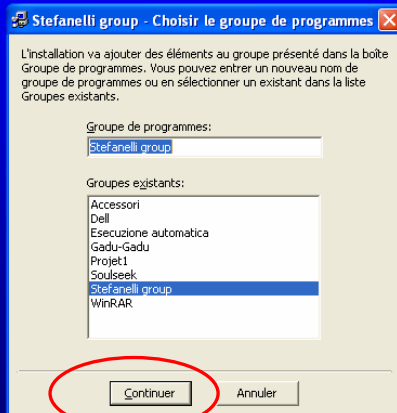
STEP 3.

Installation de Stefanelli group



STEP 4.

Installation de Stefanelli group



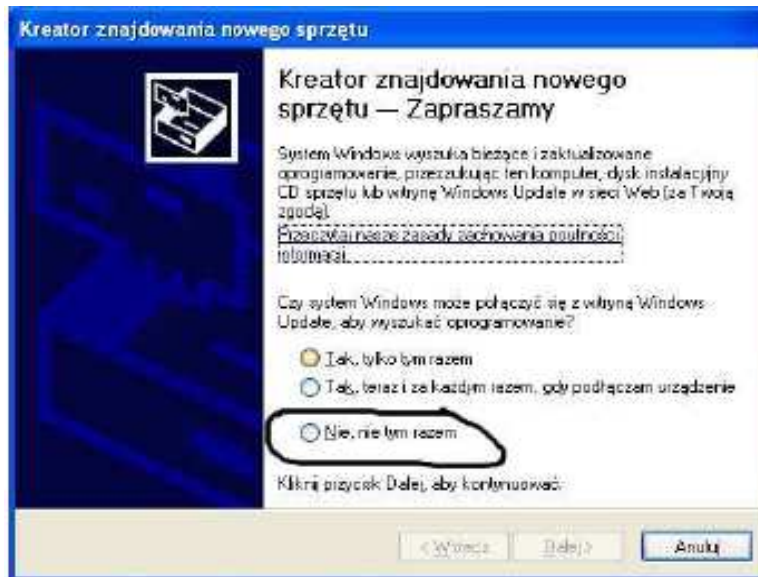
After this operation Stefanelli software is already installed on your computer.

Now you must install USB interface.

2. USB Installation Guide

After connection of USB your computer will detect new device and will ask you about drivers.

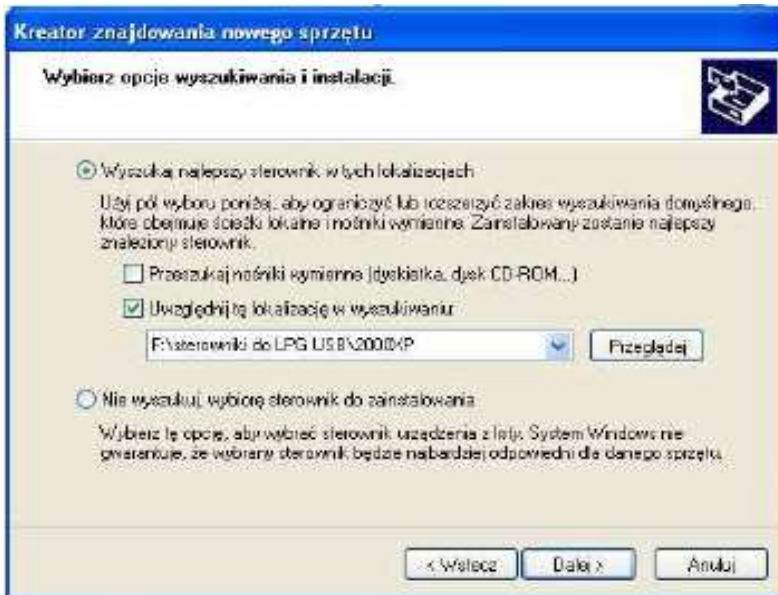
STEP 1. Computer will ask you about updating - Choose third option – “No, not now”



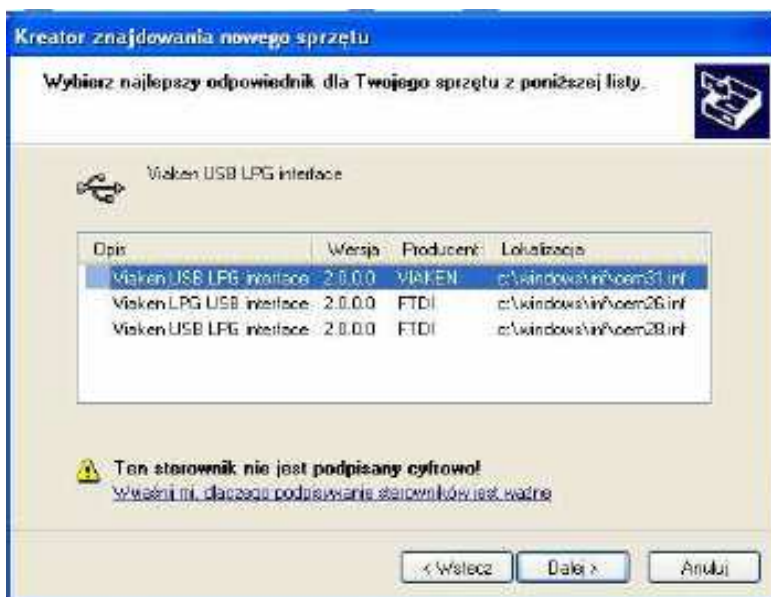
STEP 2. Choose „Install from the precise location”



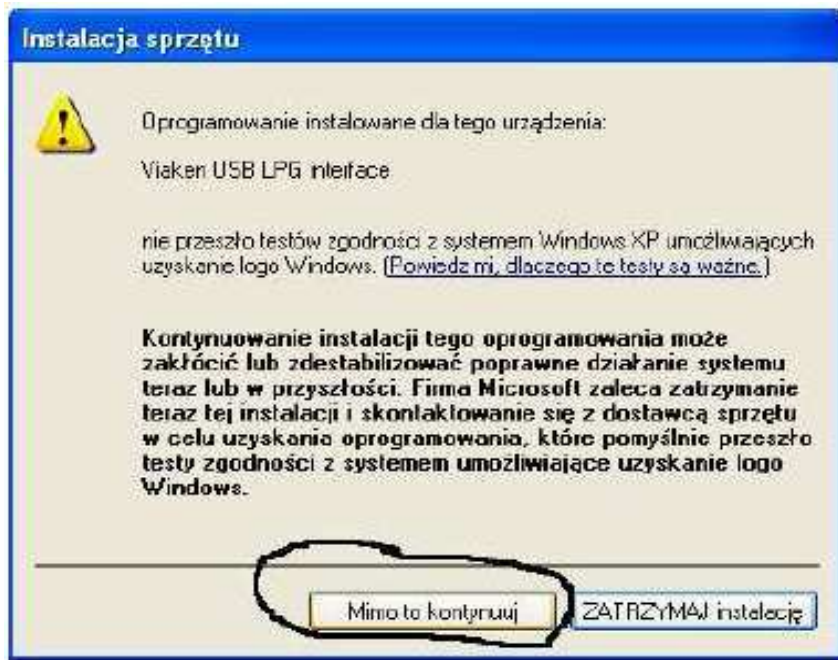
STEP 3. Choose „Browse” and find the location of CD in your computer then USB DRIVERS and 2000XP. After that push NEXT



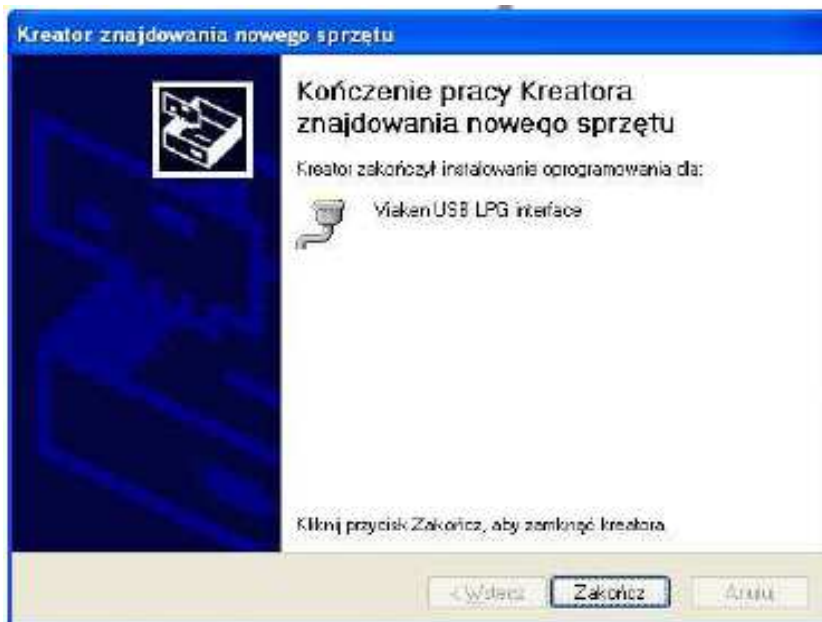
STEP 4. Choose first driver – then NEXT



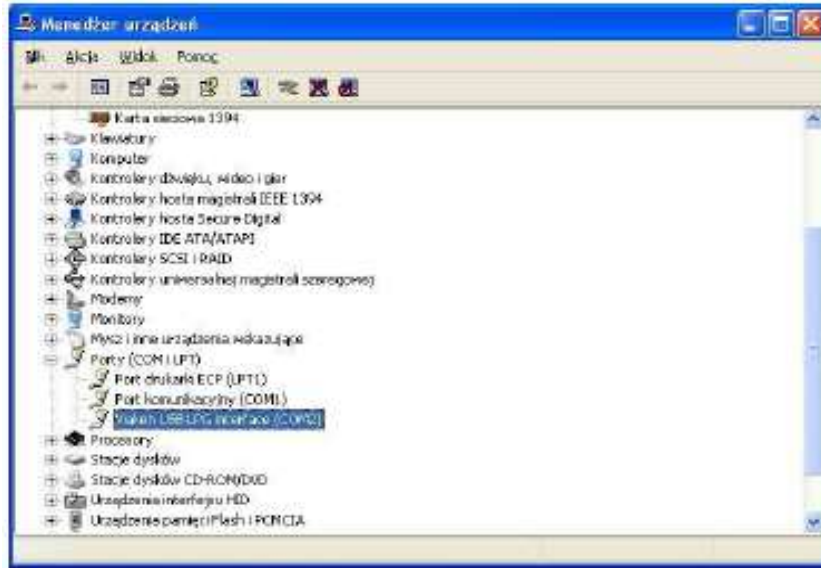
STEP 5. ACCEPT IT



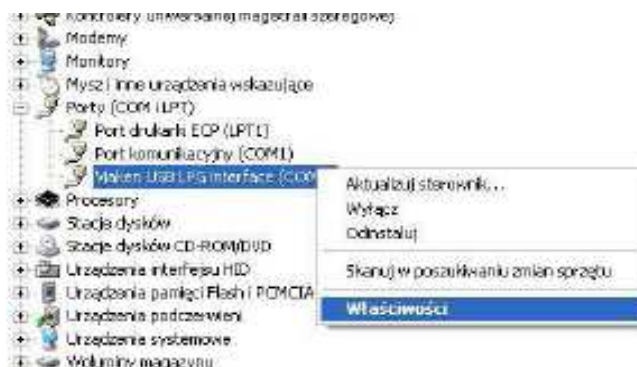
STEP 6. HERE INSTALLATION OF USB DRIVERS IS FINISHED. JUST CONFIRM IT.



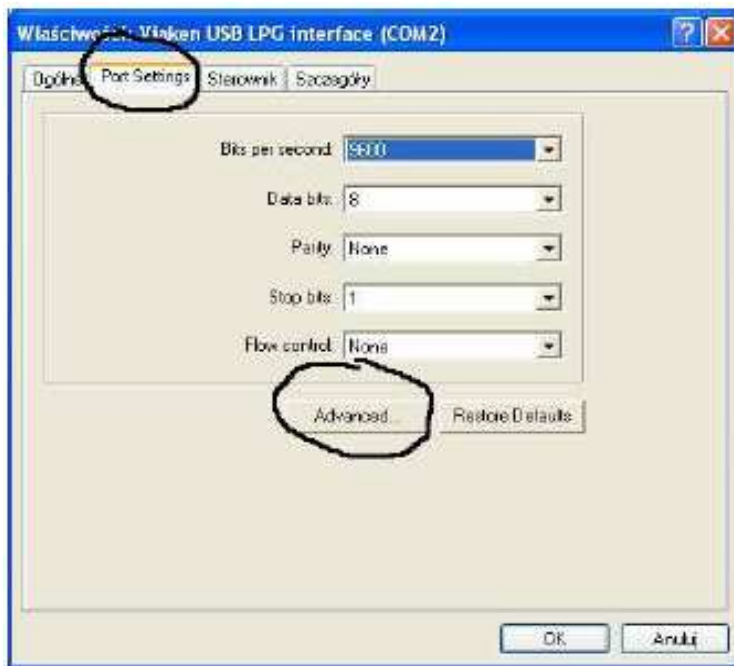
STEP 7. AFTER INSTALLATION YOU MUST CHECK ON WHICH PORT YOUR INTERFACE WAS INSTALLED. SHOULD BE IN com1, com2, com3 OR com4. YOU WILL SEE IT IN YOUR MANAGER OF DEVICES (UNDER PANEL OF CONTROL)



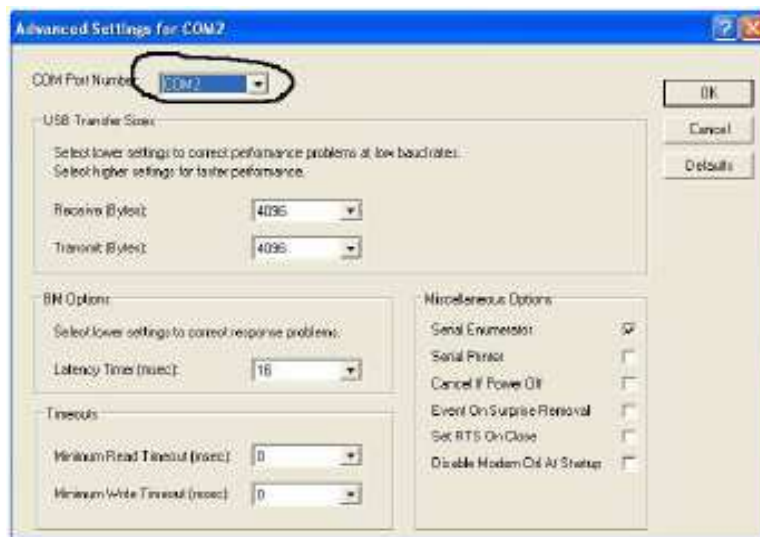
STEP 8 IF YOUR INTERFACE WAS NOT INSTALLED ON ONE OF THESE PORTS YOU MUST TO CHANGE **PREFERENCES** BY RIGHT CLICK OF MOUSE ON INTERFACE FILE.



STEP 9. THEN „advancet” IN ATTACH „port setting”



AND CHOOSE FREE PORT COM (FROM 1 TO 4)



**HERE THE INSTALLATION PROCESS IS FINISHED. REMEMBER TO RESTART YOUR COMPUTER BEFORE USING!
IN CASE OF ANY PROBLEMS JUST WRITE ON OUR E-MAIL
info@stefanelligroup.com**